

ABBREVIATIONS

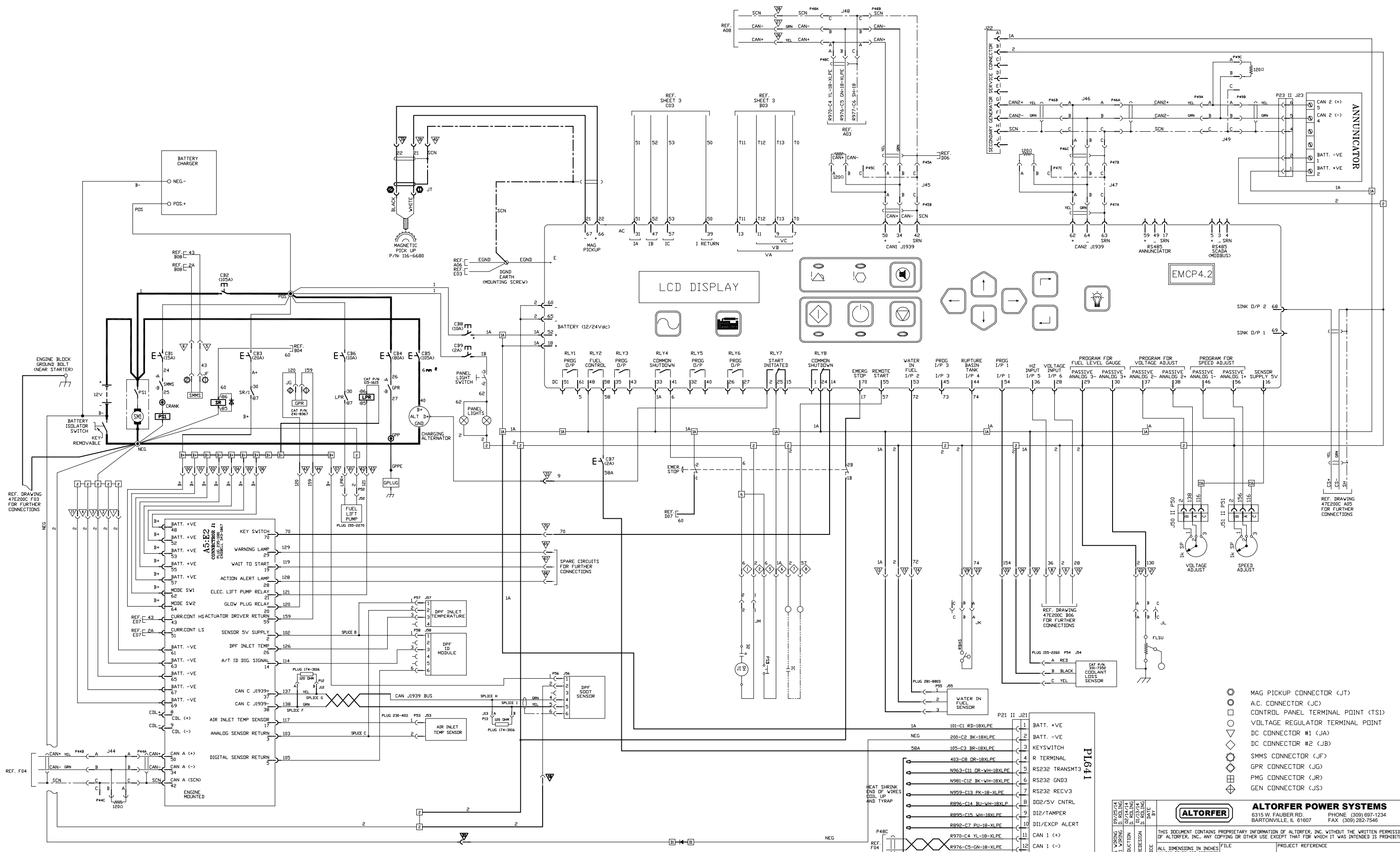
ALS	ALARM SILENCE PUSH BUTTON
ALT	ALTERNATOR
AWG	AMERICAN WIRE GAUGE
CB	CIRCUIT BREAKER
CD AUX	CHANGEDOVER SWITCH AUX CONTACT
COSS	CHANGEDOVER SWITCH DOOR SAFETY SWITCH
CT	CURRENT TRANSFORMER
D	DIODE
ESPB	EMERGENCY STOP PUSH BUTTON
F	FUSE
FLG	FUEL LEVEL GAUGE
FLSU	FUEL LEVEL SENDING UNIT
GPP	GLOW PLUG POST
GPR	GLOW PLUG RELAY
IC	REMOTE START/STOP INITIATE CONTACT
LFLAS	LOW FUEL LEVEL ALARM SWITCH
NC	NORMALLY CLOSED
NO	NORMALLY OPEN
PL	PANEL ILLUMINATION LIGHT
PLS	PANEL LIGHT SWITCH
PS	PINION SOLENOID
PSS	PERSONNEL SAFETY SWITCH
SEC	SECOND
SHTC	CIRCUIT BREAKER SHUNT TRIP COIL
SM	STARTING MOTOR
SMMS	STARTING MOTOR MAGNETIC SWITCH
T	GENERATOR LINE LEADS
VSR1	VOLTAGE SLAVE RELAY 1
VSR2	VOLTAGE SLAVE RELAY 2

SYMBOLS

	A.C. CONNECTOR (JC)		EMERGENCY STOP
	A.C. CONNECTOR (JD)		RAISE
	CONTROL PANEL TERMINAL POINT (TS1)		LOWER
	VOLTAGE REGULATOR TERMINAL POINT		ON
	DC CONNECTOR #1 (JA)	○	OFF
	DC CONNECTOR #2 (JB)		LAMP
	DC POWER BOX CONNECTOR (JE)		PANEL ILLUMINATION LIGHT
	SMMS CONNECTOR (JF)		
	GPR CONNECTOR (JG)		
	PMG CONNECTOR (JR)		
	GEN CONNECTOR (JS)		
	STANDARD WIRING		
	CUSTOMER WIRING		
	LOAD PAN WIRING		
	SHIELDED WIRE		
	RELAY CONTACT (NORMALLY OPEN)		
	RELAY CONTACT (NORMALLY CLOSED)		
	GENERATOR FRAME (CHASSIS) GROUND		
	EARTH GROUND		
	LIQUID LEVEL SWITCH		
	LEVEL SENDING UNIT		
	MANUALLY OPERATED CONTROL		
	OPERATED BY TURNING		
	DIODE		
	FUSE		
	EMERGENCY SWITCH		
	RELAY COIL		
	CIRCUIT BREAKER		
	CAPACITOR		

ABBREVIATIONS AND SYMBOLS

3 CORRECT FOR THE WIRING 2 REVISE FOR PRODUCTION 1 PER PROTOTYPE CHANGES. CHANGE NOTICE DATE BY 02/14/14 02/14/14 02/14/14			<b>ALTORFER POWER SYSTEMS</b> 6315 W. FAUBER RD. PHONE (309) 697-1234 BARTONVILLE, IL 61607 FAX (309) 282-7546	
	THIS DOCUMENT CONTAINS PROPRIETARY INFORMATION OF ALTORFER, INC. WITHOUT THE WRITTEN PERMISSION OF ALTORFER, INC., ANY COPYING OR OTHER USE EXCEPT THAT FOR WHICH IT WAS INTENDED IS PROHIBITED.			
	ALL DIMENSIONS IN INCHES UNLESS OTHERWISE SPECIFIED TOLERANCES: X.X ± 0.100 X.XX ± 0.050 X.XXX ± 0.005 ANGLAR ± 1°	FILE DF/47E SCALE/SHEET SIZE 1=1/D SHEET 1 OF 3	PROJECT REFERENCE APS100T41 RENTAL UNITS DRAWN BY D. ROLING DATE 07/12/2013	QUOTE NUMBER WORK ORDER NUMBER DRAWING NUMBER 47E200A-03
TITLE DIAGRAM - WIRING EMCP 4.2				



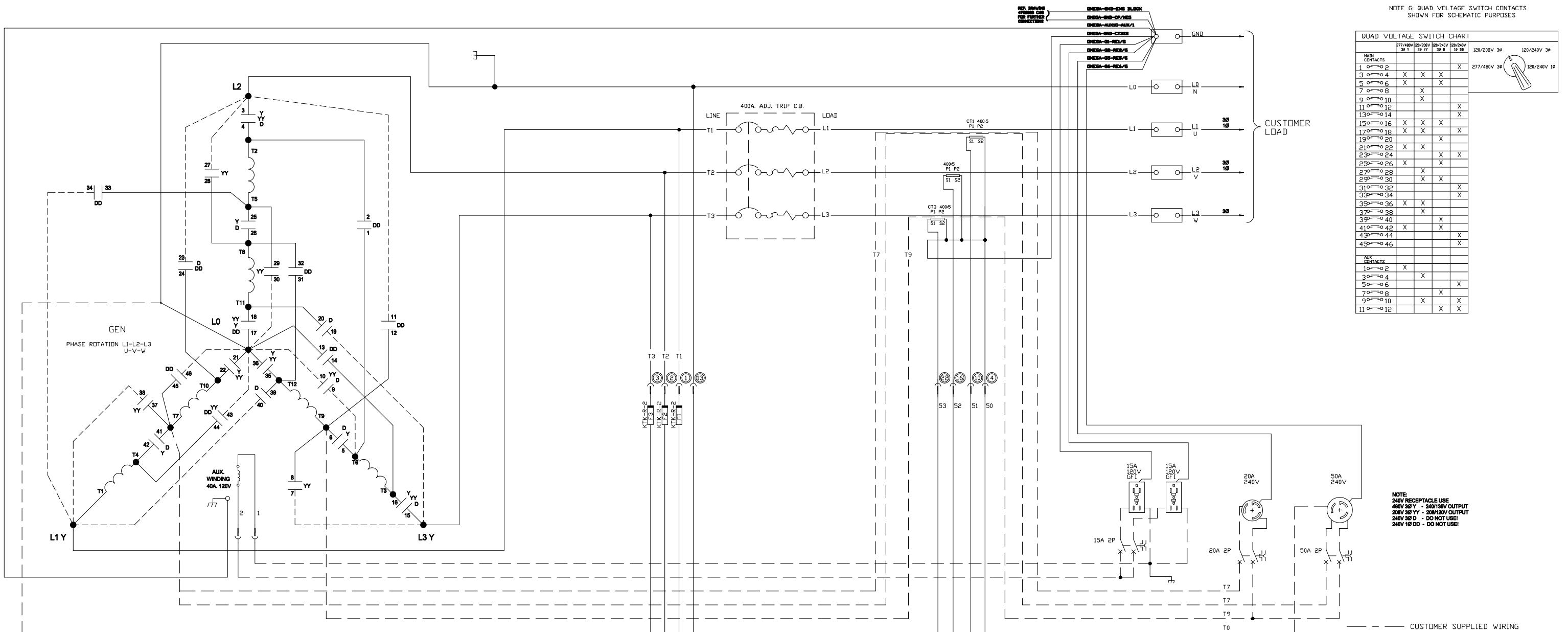
REF. DRAWING 47E200C F03 FOR FURTHER CONNECTIONS

REF. F04

REF. DRAWING 47E200C F03 FOR FURTHER CONNECTIONS

- MAG PICKUP CONNECTOR (JT)
- A.C. CONNECTOR (JC)
- CONTROL PANEL TERMINAL POINT (TS1)
- VOLTAGE REGULATOR TERMINAL POINT
- DC CONNECTOR #1 (JA)
- DC CONNECTOR #2 (JB)
- R TERMINAL
- SMMS CONNECTOR (JG)
- GPR CONNECTOR (JF)
- PMG CONNECTOR (JR)
- GEN CONNECTOR (JS)

<b>ALTORFER</b> 6315 W. FAUBER RD. BARTONVILLE, IL 61607		<b>ALTORFER POWER SYSTEMS</b> PHONE (309) 697-1234 FAX (309) 282-7546	
		THIS DOCUMENT CONTAINS PROPRIETARY INFORMATION OF ALTORFER, INC. WITHOUT THE WRITTEN PERMISSION OF ALTORFER, INC., ANY COPYING OR OTHER USE EXCEPT THAT FOR WHICH IT WAS INTENDED IS PROHIBITED.	
FILE DF\47E	PROJECT REFERENCE APS100T41 RENTAL UNITS	DRAWN BY D. ROLING	QUOTE NUMBER
SCALE/SHEET SIZE 1=1/D	DATE 07/12/2013	WORK ORDER NUMBER	DRAWING NUMBER 47E200B-03



NOTE: QUAD VOLTAGE SWITCH CONTACTS SHOWN FOR SCHEMATIC PURPOSES

MAIN CONTACTS	277/480V 3Ø Y	120/208V 3Ø Y	120/240V 3Ø D	120/240V 3Ø DD	120/208V 3Ø	120/240V 3Ø
1 0-2				X		
3 0-4	X	X	X			
5 0-6	X	X	X			
7 0-8			X			
9 0-10		X				
11 0-12				X		
13 0-14				X		
15 0-16	X	X	X			
17 0-18	X	X	X			
19 0-20			X			
21 0-22	X	X				
23 0-24			X	X		
25 0-26	X					
27 0-28		X				
29 0-30	X	X				
31 0-32				X		
33 0-34				X		
35 0-36	X	X				
37 0-38		X				
39 0-40			X			
41 0-42	X	X				
43 0-44				X		
45 0-46				X		
<b>AUX CONTACTS</b>						
10 0-2	X					
30 0-4		X				
50 0-6			X			
70 0-8			X			
90 0-10	X	X				
110 0-12		X	X			

NOTE: 240V RECEPTACLE USE  
 480V 3Ø Y - 240/130V OUTPUT  
 208V 3Ø Y - 208/120V OUTPUT  
 240V 3Ø D - DO NOT USE!  
 240V 1Ø DD - DO NOT USE!

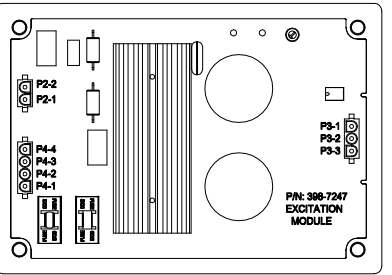
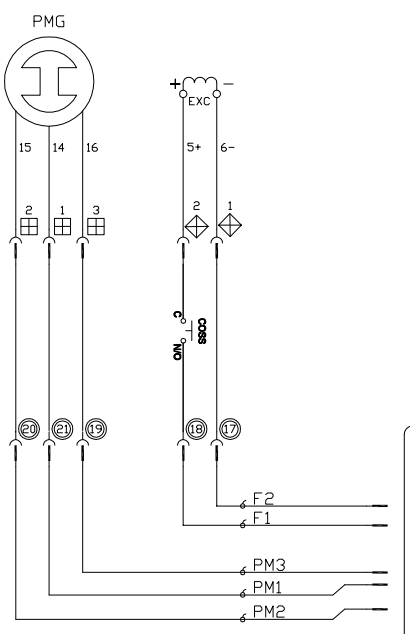
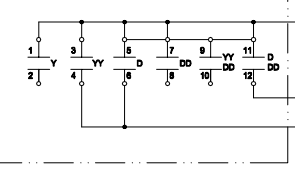
— CUSTOMER SUPPLIED WIRING  
 - - - - - LOAD PAN WIRING  
 — CONTROL PANEL WIRING

- A.C. CONNECTOR (JC)
- CONTROL PANEL TERMINAL POINT (TS1)
- VOLTAGE REGULATOR TERMINAL POINT
- ◇ DC CONNECTOR #1 (JA)
- ◇ DC CONNECTOR #2 (JB)
- ◇ SMMS CONNECTOR (JF)
- ◇ GPR CONNECTOR (JG)
- ◇ PMG CONNECTOR (JR)
- ◇ GEN CONNECTOR (JS)

**LEROY-SOMER GENERATOR RECONNECTION**

277/480V, 3Ø, HI-WYE (Y)  
 120/208V, 3Ø, LO-WYE (YY)  
 120/240V, 3Ø, DELTA (D)  
 120/240V, 1Ø, DOUBLE DELTA (DD)  
 NOTE: L2 IS HIGH LEG IN 120/240V, 3Ø

**ROTARY SWITCH AUXILIARY SWITCH**



**GENERATOR RECONNECTION**

277/480V, 3Ø, HI-WYE (Y)  
 120/208V, 3Ø, LO-WYE (YY)  
 120/240V, 3Ø, DELTA (D)  
 120/240V, 1Ø, DOUBLE DELTA (DD)

- CONNECTIONS:**  
 T1/L1 TO 34, 38, & 40.  
 T2 TO 2 & 4.  
 L2 TO 3, 11, 23 & 27.  
 T3 TO 14 & 16.  
 L3 TO 7, 15 & 19.  
 T4 TO 42 & 44.  
 T5 TO 25, 29, & 33.  
 T6 TO 1, 5, & 9.  
 T7 TO 37, 41 & 45.  
 T8 TO 26, 28 & 32.  
 T9 TO 6, 8 & 12.  
 T10 TO 22 & 24.  
 T11 TO 18 & 20.  
 T12 TO 31, 35 & 39.  
 L0 TO 10, 13, 17, 21, 30, 36, 43, & 46.

3	CONVERT TO 1/8" FROM 1/4" WIRING	02/14/14	DATE	FILE	PROJECT REFERENCE
2	REVISE FOR PRODUCTION	02/14/14	BY	DF\47E	APS100T41 RENTAL UNITS
1	PER PROTOTYPE REVISION	02/14/14	DATE	SCALE/SHEET SIZE	DRAWN BY
1	CHANGE NOTICE	02/14/14	DATE	1=1/D	D. ROLING
TOLERANCES:		THIRD ANGLE PROJECTION	SHEET		DATE
X.X ± 0.100			3 OF 3		07/12/2013
X.XX ± 0.050			TITLE		WORK ORDER NUMBER
X.XXX ± 0.005			DIAGRAM - WIRING EMCP 4.2		DRAWING NUMBER
ANGULAR ± 1'			47E200C-03		